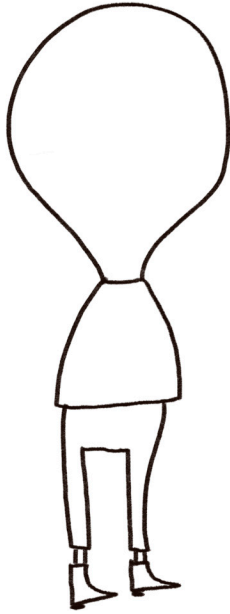


# How to draw the TOOTH FAIRY



1. Draw the head and body using simple shapes. Add some pointy boots.



2. Draw some arms and hands and add a big tooth for the fairy to hold. Next come the details!



3. Add ears, eyes, nose and mouth and give your tooth fairy some big glasses!



4. Draw some wings and give her some hair. And don't forget a tool belt for her flashlight!